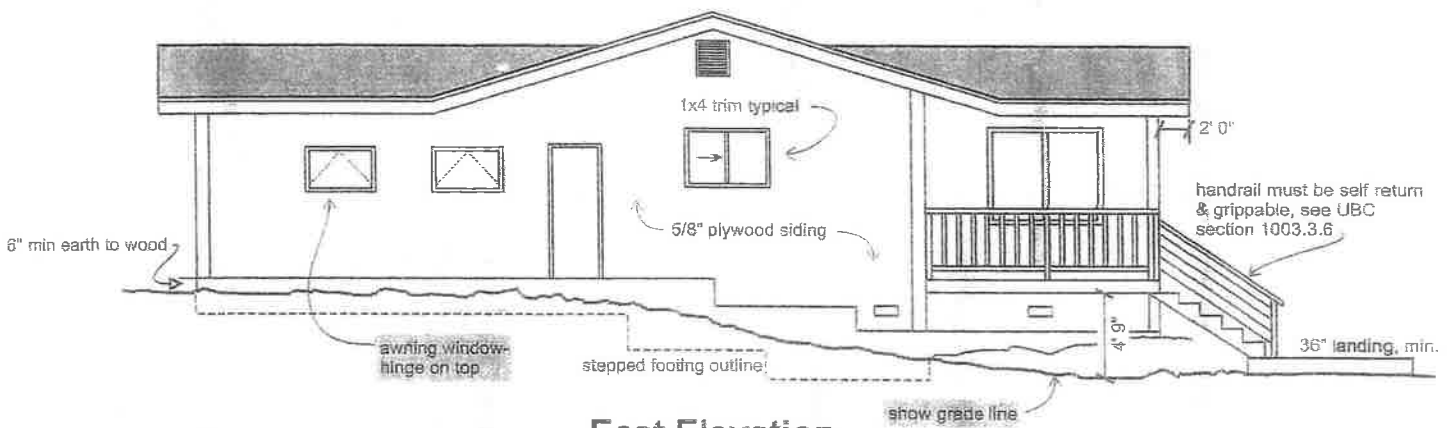


South Elevation

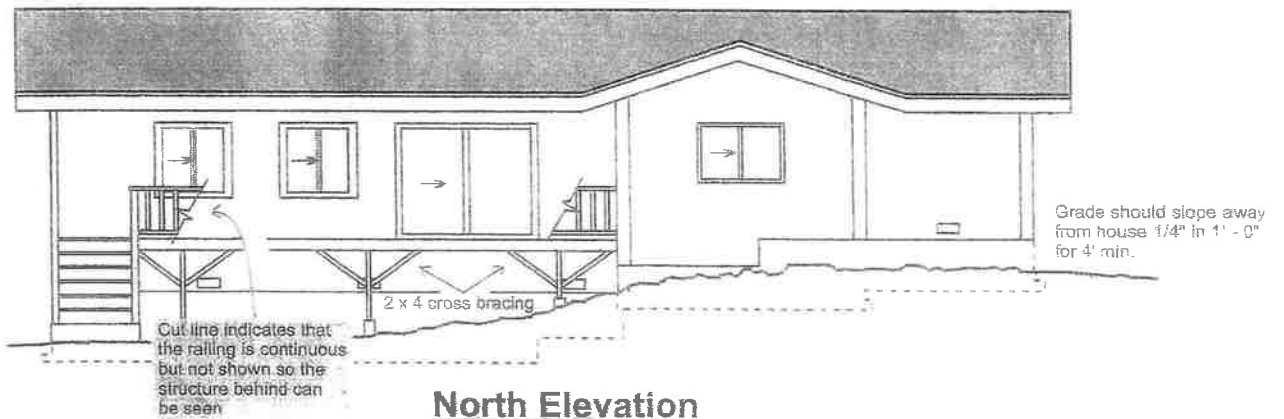
1/4" = 1'-0"

1.136 = 7.6 sq.ft.
underfloor ventilation required



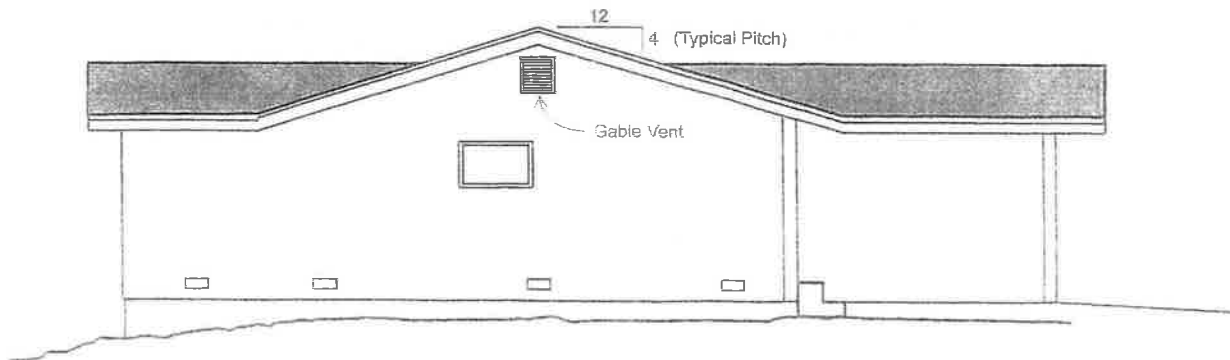
East Elevation

1/4" = 1'-0"



North Elevation

1/4" = 1'-0"

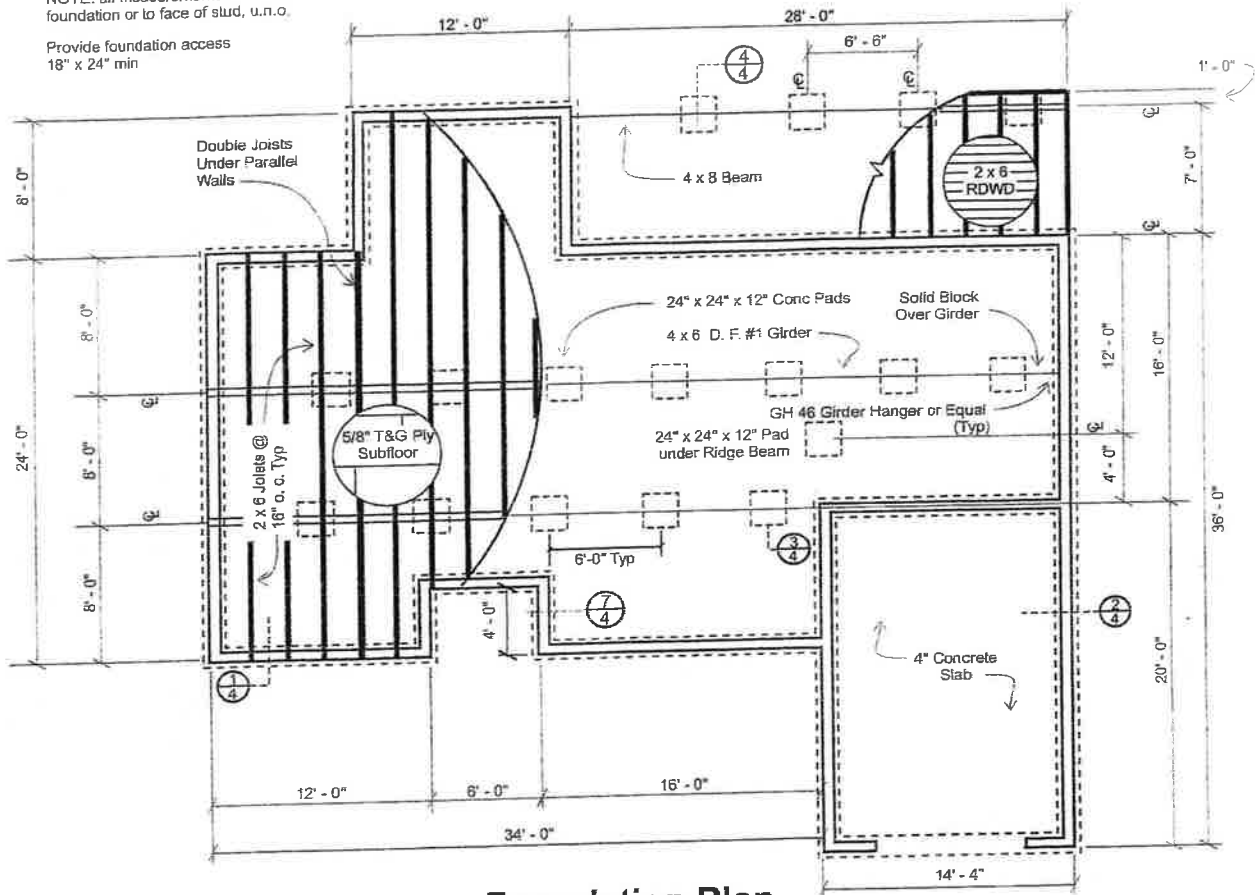


West Elevation

1/4" = 1'-0"

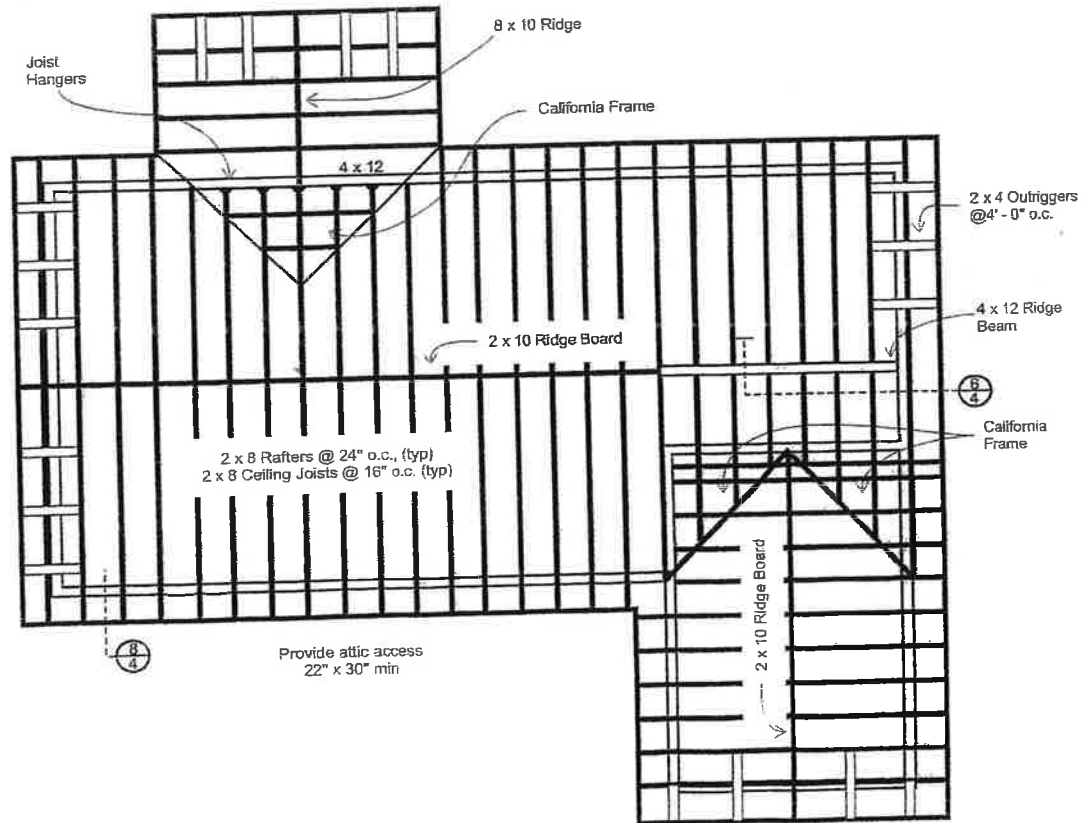
NOTE: all measurements to face of foundation or to face of stud, u.n.o.

Provide foundation access
18" x 24" min



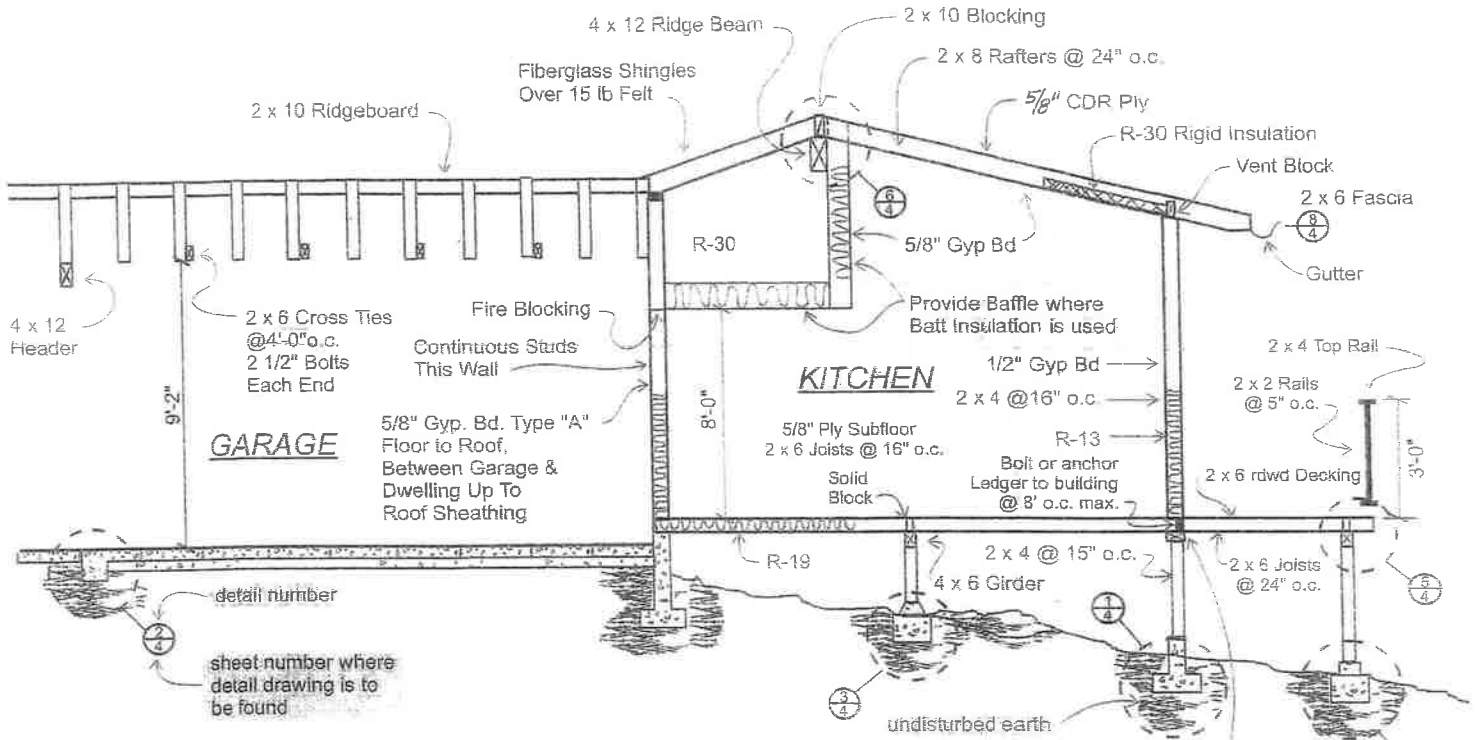
Foundation Plan

1/4" = 1'-0"



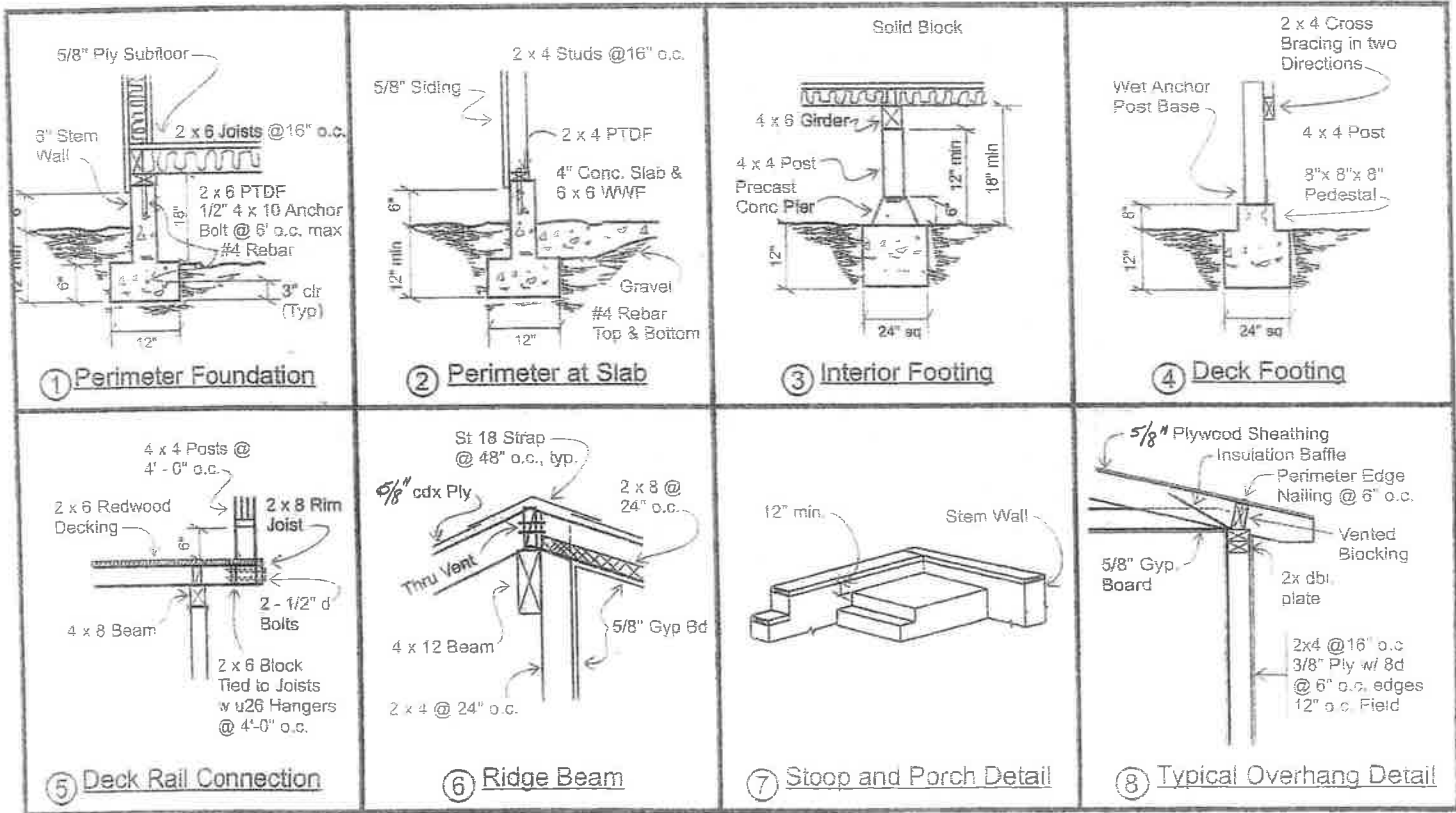
Roof Framing Plan

1/4" = 1'-0"



a cross section is a slice through the building at a point indicated on the plan view that shows the structure

A Cross Section
1/4" = 1'-0"



Structural Details
1 1/2" = 1' 0"