

Data Reporting for Alzheimer's Day Care Services

Alzheimer's Day Care Services is a Title IIIB priority service. It is defined by the California Department of Aging as "Day of attendance (four hour minimum at a licensed Adult Day Care or Adult Day Care Health Center that provides Alzheimer's or dementia services".

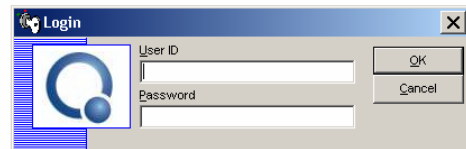
Service unit of measure is one day of attendance (four hours minimum).

Alzheimer's Day Care Services is a non-registered service. As such, the providing agency is not required to report client data. Contracting agencies do have to report estimated Alzheimer's Day Care Services days of attendance totals for each quarter.

Quarter	Q1 (7/1 - 9/30)	Q2 (10/1 - 12/31)	Q3 (1/1 - 3/31)	Q4 (4/1 - 6/30)
Days of Attendance				

Service Unit Entry

1) Log into your Q system account.



2) Open "Aggregate Service Unit Entries by Agency." (Fig.1)

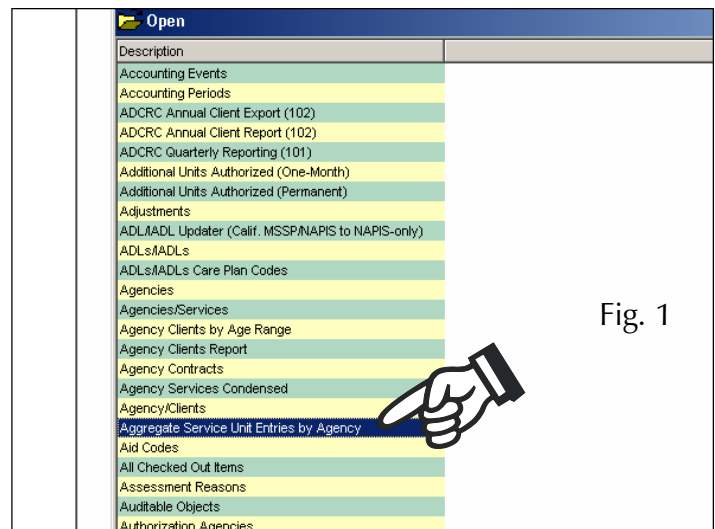
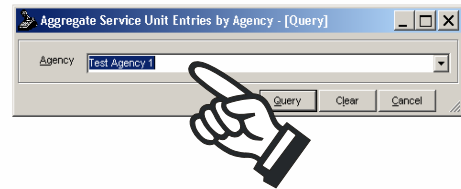


Fig. 1

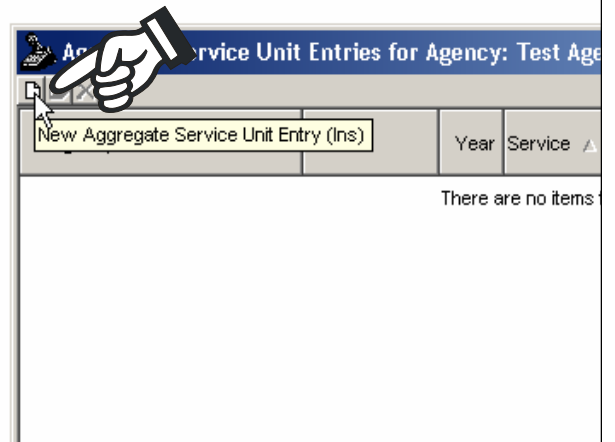
3) Select your agency (Fig.2).

Fig. 2



4) Click on "New Aggregate Service Unit Entry" icon (Fig. 3).

Fig. 3



5) Enter fields for the aggregate service unit entry (Fig. 4):

Service = *NAPIS - Alzheimer's Day Care Services*

Program = *<blank>*

Unit = *Day*

Funding Source = *Title II B*

Rate Condition = *<blank>*

Month = *<entry month>*

Year = *<entry year>*

Total Units Delivered = *<number of days of Alzheimer's Day Care Services delivered during quarter>*

When finished entering service units for the quarter, click "Save" button.

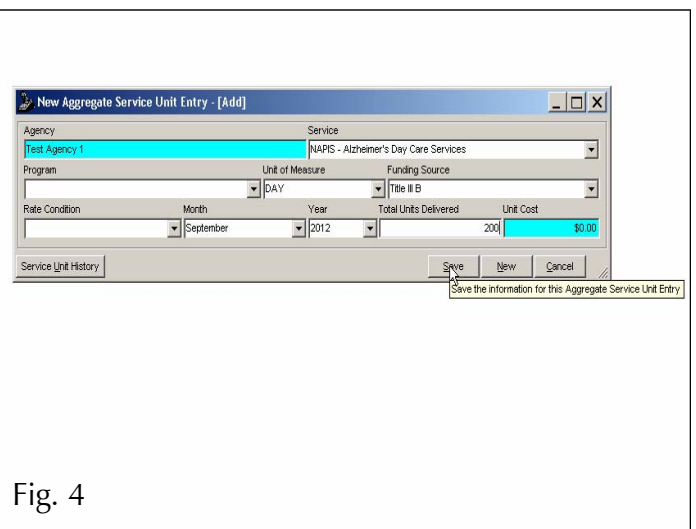


Fig. 4