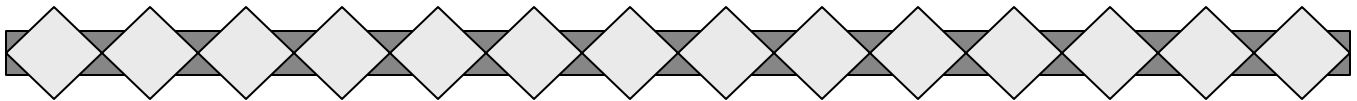


Does Your Construction Site Need a Stormwater Permit?

As of March 10, 2003, all construction activity (clearing, grading, excavating, stockpiling fill, and associated staging areas) resulting in land disturbance equal or greater than 1 acre is required to obtain coverage under the Construction General Permit. Permit coverage must also be obtained if disturbance is less than 1 acre but is part of a larger plan of development that does exceed an acre.



If your project exceeds these criteria, you should contact your Regional Water Quality Control Board to file a Notice of Intent to Comply with the Construction General Permit and prepare a Storm Water Pollution Prevention Plan (SWPPP) for your project.

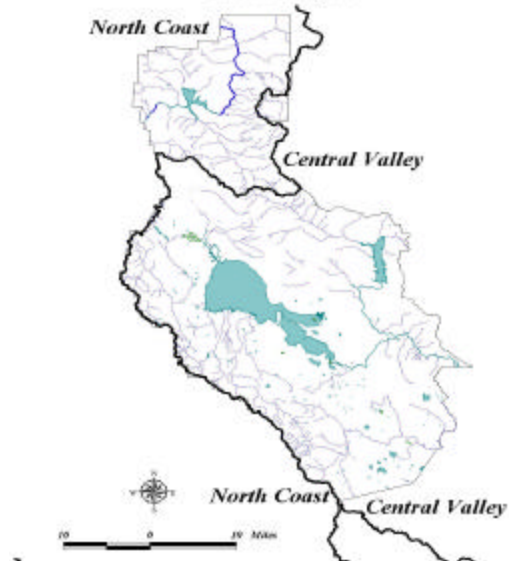


The Community Development Department will not issue a grading permit until confirmation of your Waste Discharger ID number is obtained.



Contact the appropriate Regional Water Quality Control Board to determine your permit coverage requirements.

Regional Water Quality Control Board Regions for Lake County, CA



North Coast Region (Region 1)
5550 Skylane Blvd., Suite A
Santa Rosa, CA 95403
Phone 707-576-2220
Fax (707) 523-0135
<http://www.swrcb.ca.gov/rwqcb1/>

Central Valley Region (Region 5)
11020 Sun Center Drive, #200
Rancho Cordova, CA 95670-6114
Phone 916-464-3291
Fax (916) 464-4600
<http://www.swrcb.ca.gov/rwqcb5/>